

LE RIVAGE, A P.U.D.

BEING A REPLAT OF TRACTS 102 THROUGH 109, BLOCK 71, TOGETHER WITH A PORTION OF THE ADJACENT ROADWAYS TO THE NORTH AND TO THE WEST, PALM BEACH FARMS COMPANY PLAT NO. 3, PLAT BOOK 2, PAGES 45 THROUGH 54 SECTION 32, TOWNSHIP 46 SOUTH, RANGE 42 EAST, AND SECTION 5, TOWNSHIP 47 SOUTH, RANGE 42 EAST, PALM BEACH COUNTY, FLORIDA
JANUARY, 2001 SHEET 7 OF 8

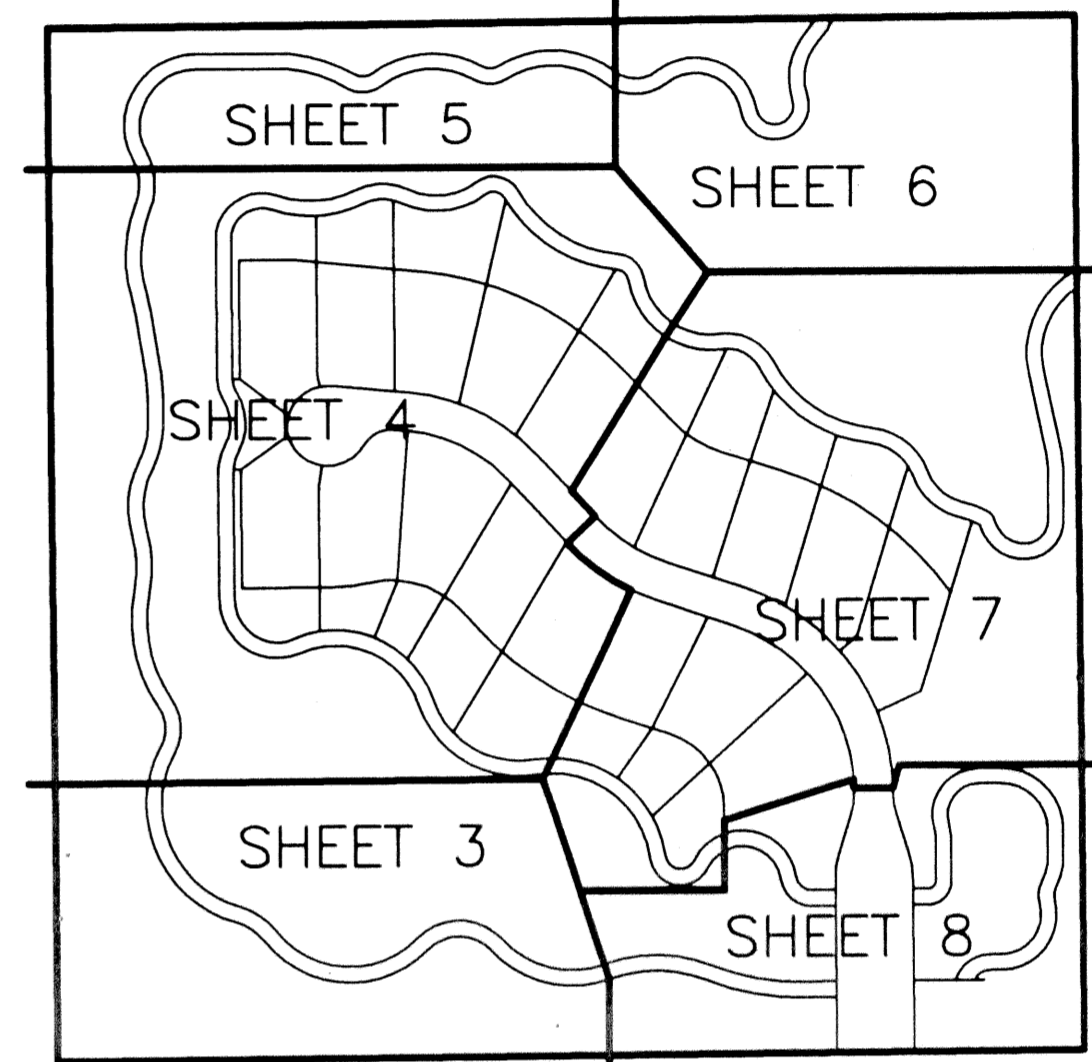
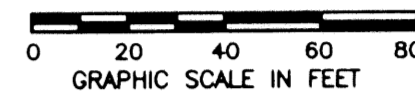
64

STATE OF FLORIDA
COUNTY OF PALM BEACH

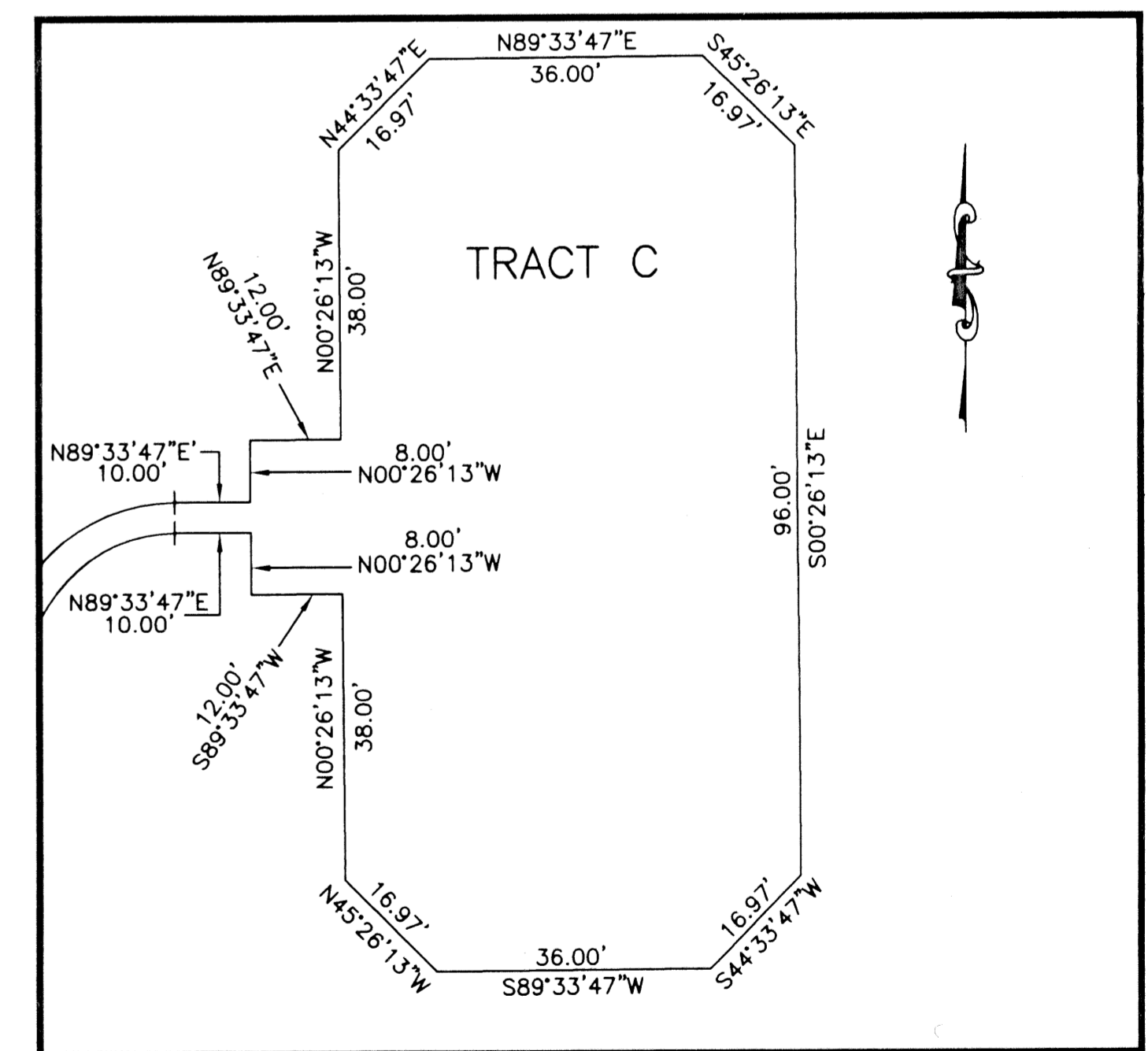
THIS PLAT WAS FILED FOR RECORD
THIS _____ DAY OF _____ AD, 2001 AND DULY RECORDED IN PLAT BOOK _____ ON PAGES _____ AND _____

DOROTHY H. WILKEN, CLERK
BY: _____, D.C.

CIRCUIT COURT SEAL



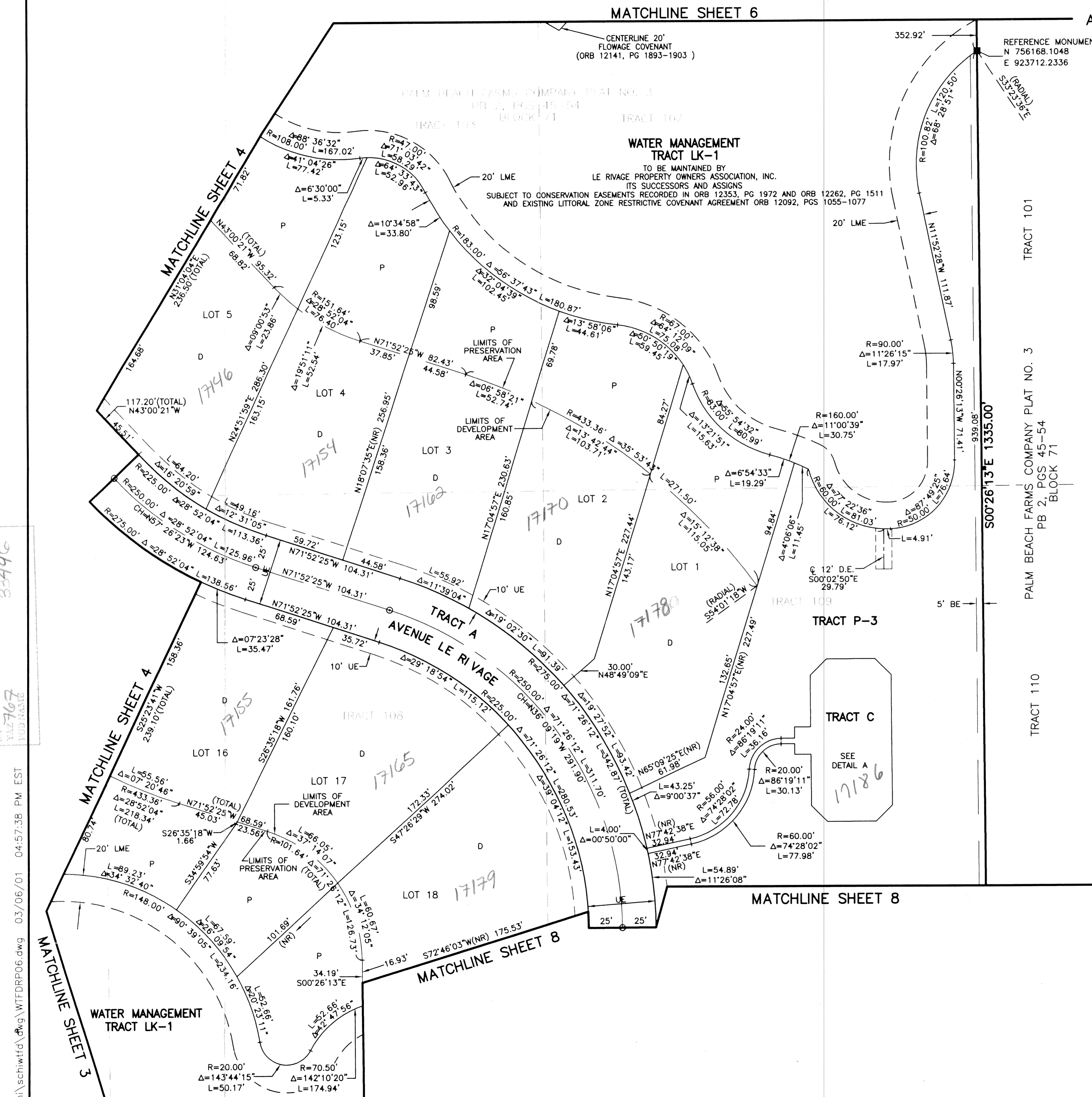
SHEET INDEX MAP



DETAIL A
NOT TO SCALE

LEGEND

- BE BUFFER EASEMENT
- Δ CENTRAL (DELTA) ANGLE
- CH CHORD
- CL CENTERLINE
- DA DEVELOPMENT AREA
- DE DRAINAGE EASEMENT
- L LENGTH
- LAE LIMITED ACCESS EASEMENT
- LME LAKE MAINTENANCE EASEMENT
- LMAE LAKE MAINTENANCE ACCESS EASEMENT
- LSE LIFT STATION EASEMENT
- (NR) NON-RADIAL
- ORB OFFICIAL RECORDS BOOK
- P PRESERVATION AREA
- PB PLAT BOOK
- P.B.CO. PALM BEACH COUNTY
- PG(S) PAGE(S)
- R RADIUS
- R/W RIGHT OF WAY
- TCE TEMPORARY CONSTRUCTION EASEMENT
- UE UTILITY EASEMENT
- O/S OFF SET
- 4" X 4" CONCRETE MONUMENT
- SET LB 048
- PERMANENT CONTROL POINT
- SET LB 048
- PALM BEACH COUNTY BRASS DISK



LE RIVAGE, A P.U.D.
 PLAT NO. 3
 PLAT BOOK 2, PAGES 45-54
 SECTION 32, TOWNSHIP 46 SOUTH, RANGE 42 EAST
 AND SECTION 5, TOWNSHIP 47 SOUTH, RANGE 42 EAST
 PALM BEACH COUNTY, FLORIDA
 JANUARY, 2001
 SHEET 7 OF 8

CAD FILE: SCHWTFD\WTFDRP06
 03/06/01 04:57:38 PM EST

THIS INSTRUMENT WAS PREPARED BY DAVID L. SMITH, P.S.M. IN THE OFFICES OF MOCK, ROOS & ASSOCIATES, INC., 5720 CORPORATE WAY, WEST PALM BEACH, FLORIDA 33407.

SCALE:	1"=40'
P.A. NO.:	99048.00
DATE:	JANUARY 2001
DRAWING NO.:	46-42-5

MOCK • ROOS
ENGINEERS • SURVEYORS • PLANNERS
5720 Corporate Way, West Palm Beach, Florida 33407
(561) 683-3113, fax 478-7248

SHEET 7 OF 8
LE RIVAGE, A P.U.D.
BEING A REPLAT OF TRACTS 102 THROUGH 109, BLOCK 71, TOGETHER WITH A PORTION OF THE ADJACENT ROADWAYS TO THE NORTH AND TO THE WEST, PALM BEACH FARMS COMPANY, PLAT NO. 3, PLAT BOOK 2, PAGES 45 THROUGH 54 SECTION 32, TOWNSHIP 46 SOUTH, RANGE 42 EAST, AND SECTION 5, TOWNSHIP 47 SOUTH, RANGE 42 EAST, PALM BEACH COUNTY, FLORIDA